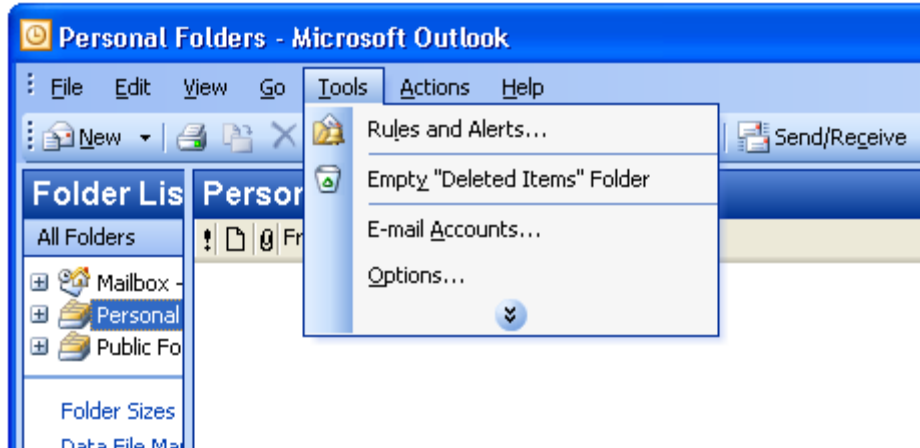


Outlook 2003 Verification

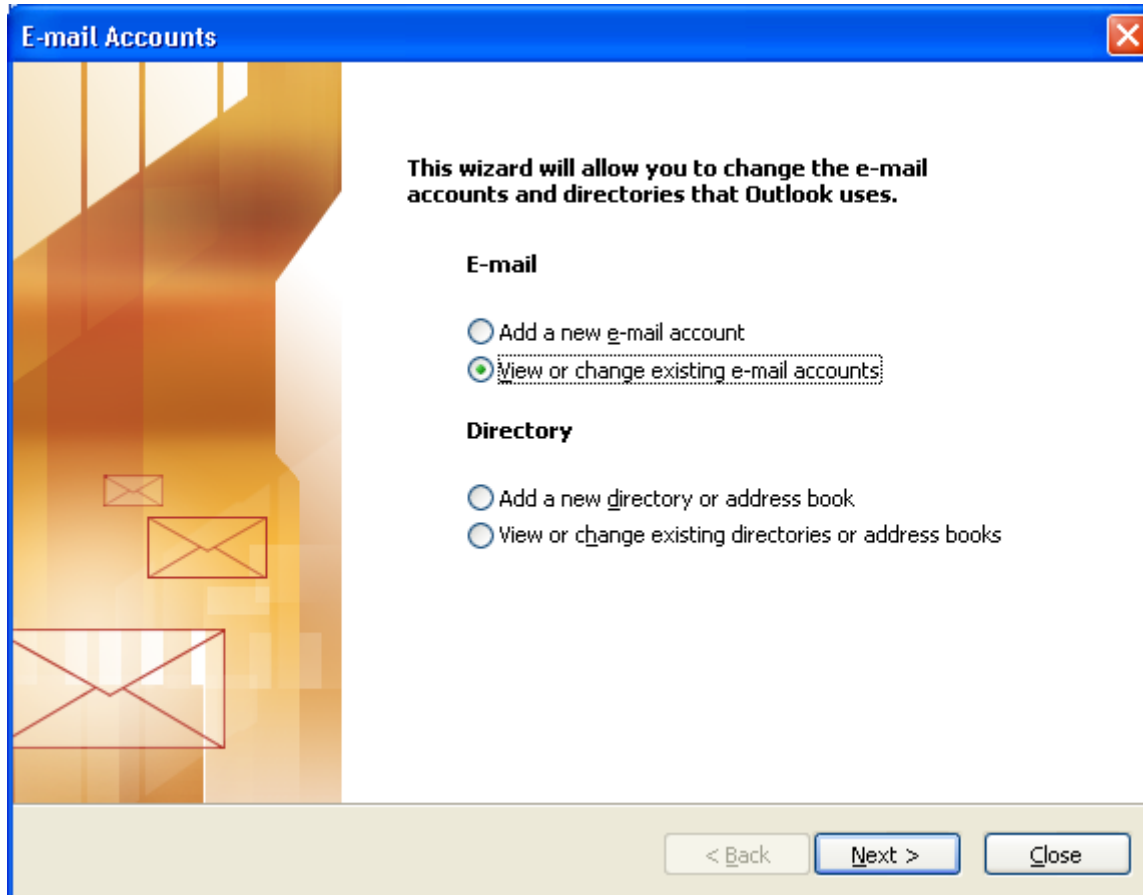
1. Open Outlook.

Click on **Tools** and then **Email Accounts**.



2. Select **View** or change existing e-mail account.

Click **Next**.



3. Under the **User Information** heading.

- Verify the name in the Your Name field.
- Verify your email address in the Email Address field.

Under the **Server Information** heading.

- Verify the Incoming Mail Server (POP3) is **pop3.molalla.net**.
- Verify the Outgoing Mail Server (SMTP) is **smtp.molalla.net**.

Under the **Logon Information** heading.

- Verify your complete email address is in the User Name field.
- Verify your password in the Password field.
- Verify Remember Password is selected.

Click on **More Settings**.

The screenshot shows a Windows-style dialog box titled "E-mail Accounts". Inside, there's a section for "Internet E-mail Settings (POP3)" with a sub-header "Each of these settings are required to get your e-mail account working." and a help icon. The settings are organized into four columns: "User Information", "Server Information", "Logon Information", and "Test Settings".

User Information		Server Information	
Your Name:	Help Desk	Incoming mail server (POP3):	pop3.molalla.net
E-mail Address:	Support@molalla.net	Outgoing mail server (SMTP):	smtp.molalla.net

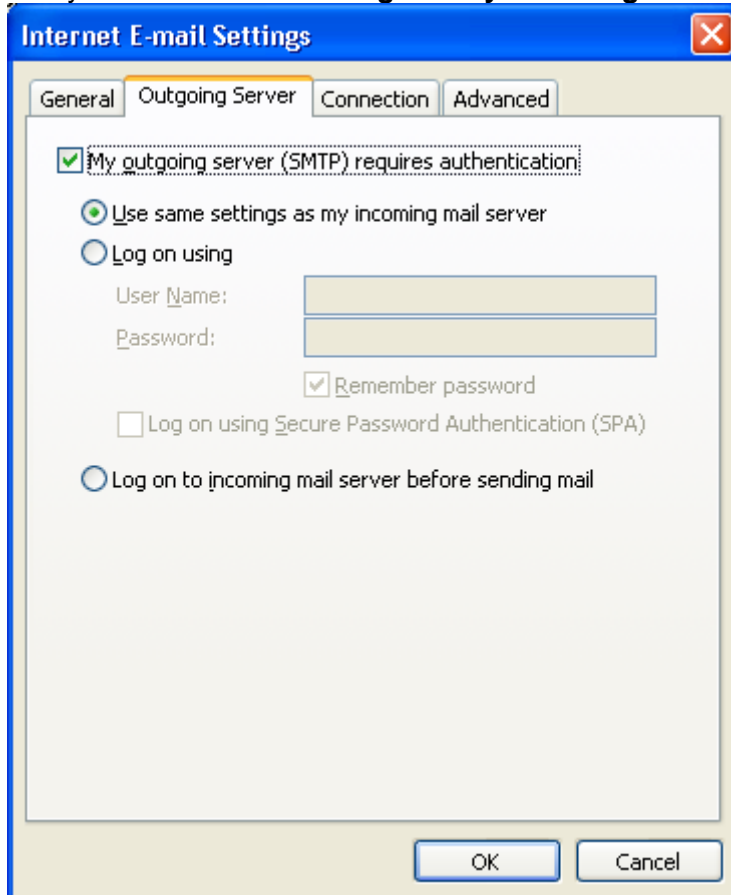
Logon Information		Test Settings	
User Name:	Support@molalla.net	After filling out the information on this screen, we recommend you test your account by clicking the button below. (Requires network connection)	
Password:	*****		
<input checked="" type="checkbox"/> Remember password		<input type="button" value="Test Account Settings ..."/>	
<input type="checkbox"/> Log on using Secure Password Authentication (SPA)			
		<input type="button" value="More Settings ..."/>	

At the bottom of the dialog, there are three buttons: "< Back", "Next >", and "Cancel".

4. Select the **Outgoing Server** tab.

Verify **My Outgoing Mail Server (SMTP) Requires Authentication** is selected.

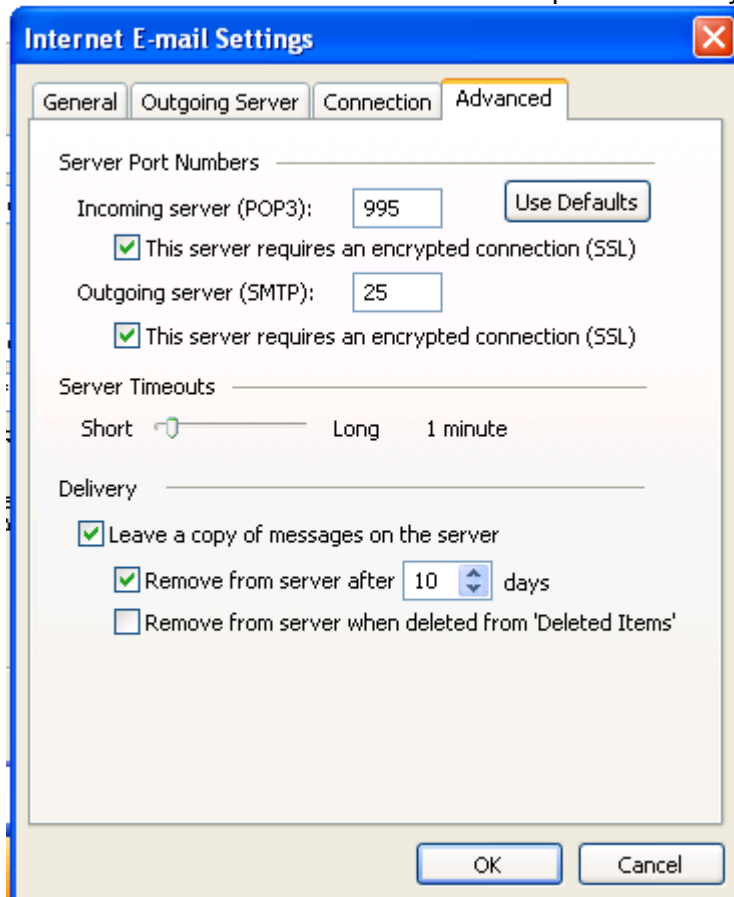
Verify that **Use Same Settings as My Incoming Mail Server** is selected.



5. Select the Advanced tab.

Verify or change the following

- Incoming server (POP3): 995
- Check mark next to This server requires an encrypted connection (SSL)
- Outgoing server (SMTP): 25
- Check mark next to This server requires an encrypted connection (SSL)



6. Click **OK** under Internet E-Mail Settings, click **Next >** and then click **Finish**.

The screenshot shows a Windows-style dialog box titled "E-mail Accounts" with a close button (X) in the top right corner. The main heading is "Internet E-mail Settings (POP3)" with a sub-heading "Each of these settings are required to get your e-mail account working." and a mouse cursor icon pointing to the text. The dialog is divided into four sections: "User Information", "Server Information", "Logon Information", and "Test Settings".

User Information

Your Name:

E-mail Address:

Server Information

Incoming mail server (POP3):

Outgoing mail server (SMTP):

Logon Information

User Name:

Password:

Remember password

Log on using Secure Password Authentication (SPA)

Test Settings

After filling out the information on this screen, we recommend you test your account by clicking the button below. (Requires network connection)

At the bottom of the dialog, there are three buttons: "< Back", "Next >", and "Cancel".